

Personal Learning Device (PLD)

Parent Briefing



AGENDA

NDLP

National Digital Literacy
Programme

RESPONSIBLE USE OF PLD

Safe Learning Environment

01

02

03

04

PERSONAL LEARNING DEVICE (PLD)

Selection Considerations

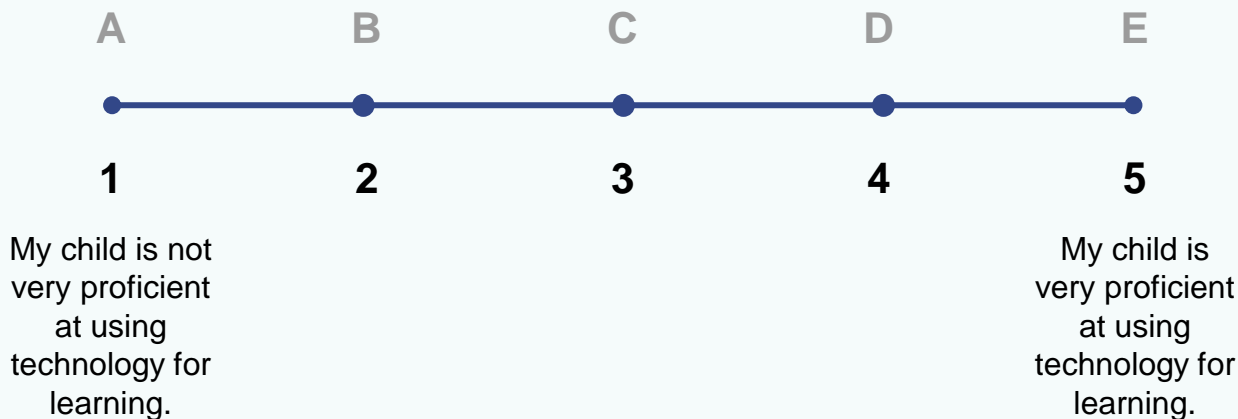
DMA + Q&A

Safe Learning
Environment



How would you rate your child's proficiency in navigating digital spaces and using digital devices?

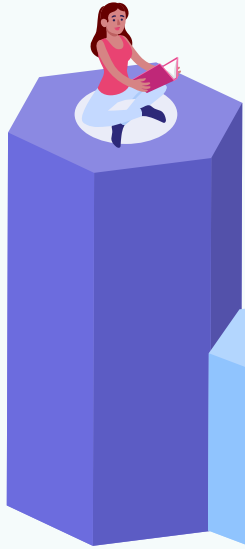
Rate on a scale of **1 to 5** how well you think your child can navigate the digital world and make use of their digital devices for teaching and learning. Select the corresponding letter in the choices to respond.



Multiple Choice

Rapid Digital Technology Advancements

Digital technology is becoming **increasingly pervasive** in jobs, workplaces & society; **changing the way we live, work & play**.



STUDENTS – equip with skills to handle changes & deal with challenges in the digital present & future.



SCHOOLS – develop students to be agile & future-ready, regardless of backgrounds & starting points in life.



PARENTS – partner schools to help prepare their children for an increasingly complex, interconnected & technology-driven world.

The National Digital Literacy Programme (NDLP)

The NDLP was launched in March 2020 to help students **strengthen their digital literacy and acquire digital skills** needed to navigate an increasingly digitalised world.

Under the NDLP, every secondary school student will **own a school-prescribed Personal Learning Device (PLD)**. Students may use funds from their Edusave Account to pay for the PLD.

Join at
slido.com
#3709 255



Intended Outcomes of a Personalised Learning Environment

The use of the PLD for teaching & learning aims to:



Support the Development of Digital Literacies

Provides an immersive environment for students to acquire digital skills.



Support self-directed and collaborative learning

Engage in self-directed learning, & to learn together with their peers, anytime & anywhere.



Enhance Teaching and Learning

Supports greater personalisation and differentiation in learning

Student Experiences



PLD Selection Considerations

POSSIBLE LEARNING ACTIONS



A. Collaborate through Web Tools



B. Access Specialised Software



C. Screen Annotation/Sketching



D. Data Collection



E. Media Production



F. Presentations

Is the proposed device able to meet common use cases of teaching & learning actions envisioned?



PLD REQUIREMENTS



A. Screen/Device Size

Ergonomics



B. Weight

Practicality



C. Operating System

Compatibility



D. Peripherals

Functionality



E. Price

Affordability

What are the pros & cons of the proposed PLD?
e.g. Cost, durability, reliability, etc



PRESCRIBED PLD



Join at
slido.com
#3709 255

Lenovo 500e 4th Gen Chromebook

PRESCRIBED PLD

Lenovo 500e 4th Gen

Unit Price: \$587.50 (w GST)

Brand	: Lenovo
Model	: Lenovo Chromebook 500e 4th Gen
Type	: Chromebook
Processor	: Intel N100
Stylus	: Yes
Bundle Type	: Enhanced
Bluetooth	: 5.1
Built-in Camera	: 720P HD Webcam Front with Mic + 5MP RGB 2nd Cam with Mic
Memory (GB)	: 4GB
Storage (GB)	: 64GB
Connections and Expansion	: 1x HDMI 1.4, 1x USB-C 3.2 Gen 2, 2x USB 3.2 Gen 1, 1x Headphone / microphone combo jack (3.5mm), 1x Pen Slot, 1x Kensington Nano Security Slot



- ✓ 3-year warranty and 3-year insurance
- ✓ 2 repairs OR 1 replacement claim



AFFORDABILITY

- Low Startup cost
- Low Maintenance & Replacement costs
- Reasonable portion of Edusave usage
- No additional accessories cost



PEDAGOGICAL AFFORDANCES

- Supports current BIG 4 applications (Gworkspace, SLS, MS Office & Nearpod)
- Meets various subject needs



TECH ASPECTS

- Durability (meets military grade testing)
- Hassle-free background OS update

Technical Support for Students' Devices



Technical support will be provided to students through:

- School service-desk
 - Basic trouble-shooting of device issues
 - Connectivity issues
 - Student Account Issues
- Lenovo Service Centre @ Tai Seng
 - Device Issues Diagnosis
 - Hardware repairs
 - Device replacement

Insurance Coverage



The package includes **a 3-year warranty & 3-year insurance*** which includes:

Insurance Coverage	Claimable
<ul style="list-style-type: none">● Fire● Lightning● Power Surges● Accidental e.g water spillage, drop etc● Theft due to forcible entry● Robbery <p>* Accidental loss will not be covered by insurance.</p>	<p>2 repairs or 1 replacement (3-year insurance)</p>

Safe & Effective Use of PLD



What would be some of the concerns you as a parent might have about the PLD?

Parents, please enter **two** words which might be a concern for you when your child obtains their PLD.



Word Cloud

Supporting Students in the Safe and Effective Use of the Devices

The school has measures in place to enable a safer digital environment for learning with the use of PLDs, e.g.

- School rules on digital device use
- Classroom management and routines
- Cyber Wellness Education in CCE (Crest Lessons)
- Partnering parents/guardians to support students in their use of technology for learning
- Device Management Application (DMA) to support a safer digital environment for learning
- Building positive Teacher-Student Relationships (TSR)
- Promoting a Peer Support Culture

Cyber Wellness Education in CCE

Educating students on Cyber Wellness

MOE has made significant changes to the Character and Citizenship Education (CCE) curriculum. Cyber Wellness lessons will feature significantly in these lessons.

The broad topics covered in Cyber Wellness are:

- Cyber Use
- Cyber Identity
- Cyber Relationships
- Cyber Citizenship
- Cyber Ethics

Cyber Wellness Education in CCE

Throughout their Secondary School education, students will learn about:

- Balanced use and self control
- Cyber bullying and Upstanding
- How to be a positive influence online
- How to handle online falsehoods
- How to manage social media (peer influence, emotions, echo chambers)
- Online relationship and Online safety (grooming, self disclosure)
- To respect intellectual property rights

Parents'/Guardians' Role

- We would like to partner parents/guardians so that that students are well supported in their use of technology for learning.
- As parents/guardians, you can help in the following ways:
 - Model good digital habits for your child/ward e.g. parents/guardians not using devices during family meals.
 - Know your child/ward well, and have conversations with your child/ward about safe and responsible use of technology.
 - Discuss and come up with ground rules for internet/device usage that both your child/ward and you can agree with.
 - Encourage your child/ward to use productivity tools using his/her PLD, to organise information and simplify tasks for efficiency.

Supporting Students in the Responsible Use of the Devices

The school has strategies to enable school-wide implementation of CCE. These include:

- Explicit teaching during CREST lessons & ICT Lessons
- Building awareness and Digital Competencies through Student Initiated Learning (SIL) activities.
- Building positive Teacher-Student Relationships
- Promoting a Peer Support Culture



Parents' Voices: Students' Use of PLDs for Learning



Supporting Students in their e-Learning Journey

ICT Skills Enrichment Programme (iSEP)

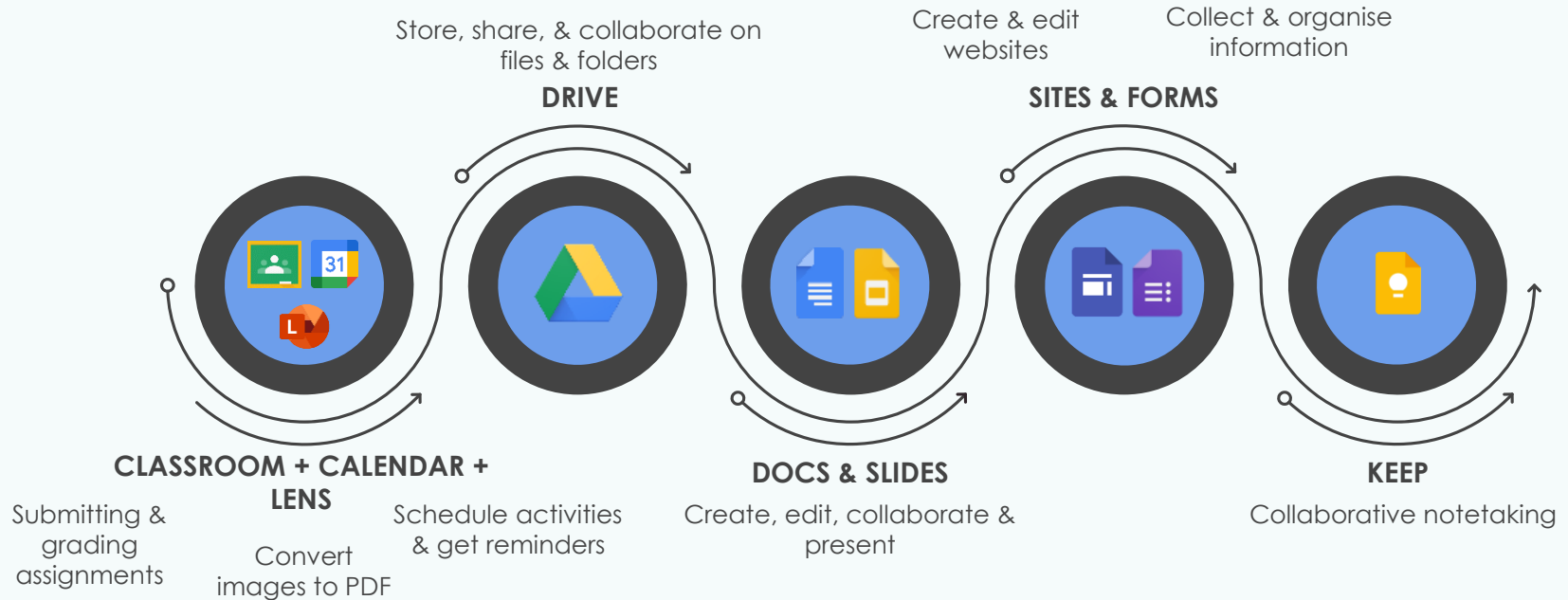
Preparing Students for Crestian Learning Day (CLD)
First CLD is 26th Jan (Friday)

ICT Induction Lessons

iSEP Lessons

Sec 1 Students go through 3 lessons to acquire important skills which allow students to navigate various ICT platforms that facilitate online/digital learning.

ICT Skills Enrichment Programme (iSEP)



ICT Skills Enrichment Programme (iSEP)



- Allow students to gain skills & familiarity for the use of their PLDs.



- Orientate & acquaint students with digital & online learning.

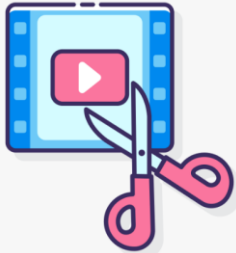
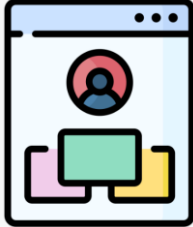


- Inculcate a sense of self-directed learning & knowledge acquisition.



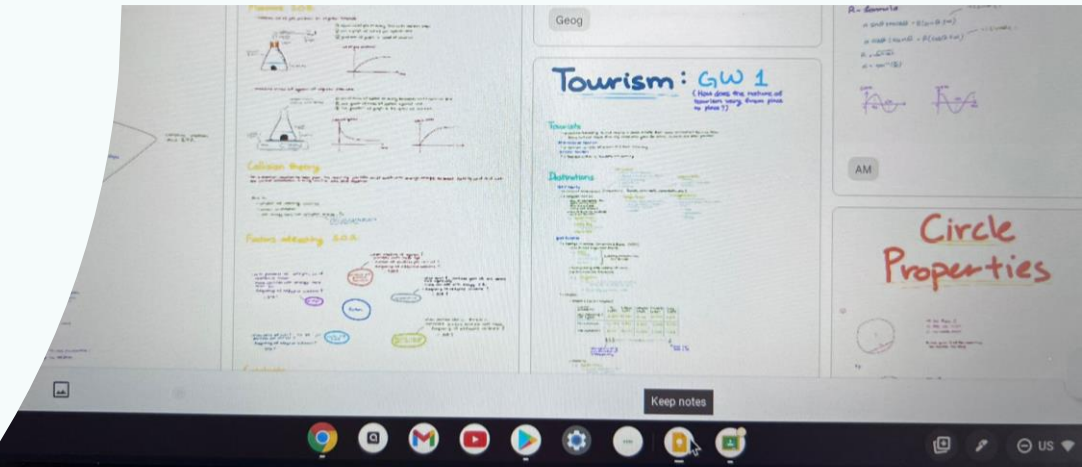
- Impart skills for collaborative work in the digital workplace of the future.

ICT Skills Enrichment Programme (iSEP) Sec 2 – 3

Secondary 2	Secondary 3
 <p data-bbox="338 647 913 910">Online iSEP lessons for video editing and content creation. Allow student to understand the consideration and skills that goes into video editing and producing quality content for learning.</p>	 <p data-bbox="983 647 1481 816">Digital Portfolio curation using Google Sites to introduce to students on portfolio/resume creation.</p> <p data-bbox="983 874 1582 1000">Also to prepare students for their Early-Admissions-Exercise (EAE) in Secondary 4.</p>



PLD In Action



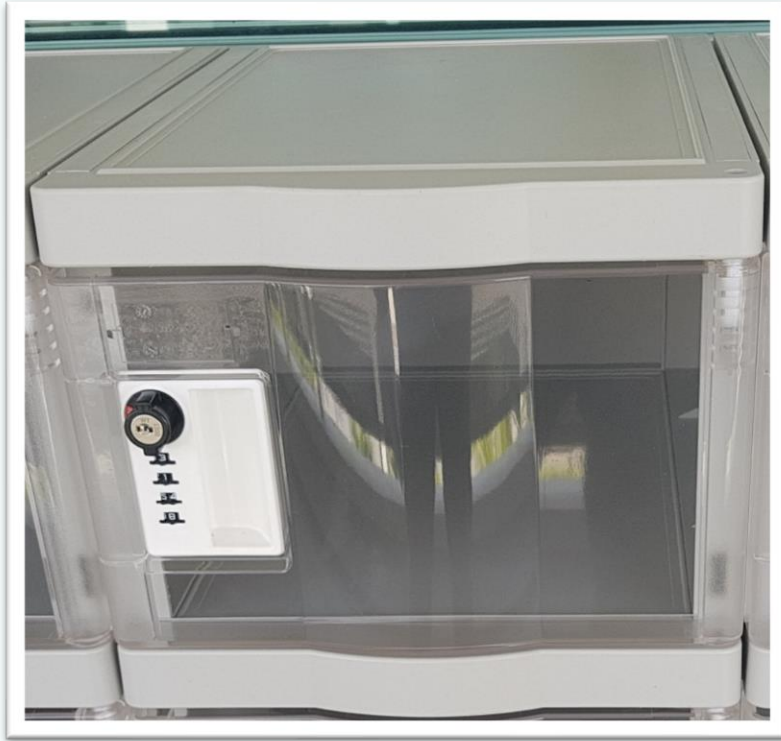
Safe Storage of PLD in School

Student Lockers



Individually assigned PLD locker located outside each classroom.

Student Lockers



Device Management Application (DMA)

Sharing some strategies on how you manage your child's device usage and screen time.

Parents, please feel free to share with us some tips on how you manage your child's screen time and device usage at home.



Short Answer

Device Management Application (DMA)

DMA software will be installed on the PLD to provide a safe learning experience for your child, & to prevent misuse of the PLD.

The DMA will be **uninstalled** when your child **graduates / leaves PRCs**.

Uses of DMA:

1. Remotely deploy educational apps & security patches
2. Enable teachers to direct students' screens during lessons
3. Restrict content from inappropriate websites & apps
4. Limit screen time



Device Management Application (DMA)

The school will determine DMA settings for **in-school use**. As a default, these settings will continue to be in place after school:

1. MOE and the school has set the level of web content filtering, including filtering out objectionable content or content that may not be conducive to teaching & learning (e.g. social media, pornography, gambling, or websites containing extremist content)
2. Students will be able to use the device from **6.30 a.m. to 9.00 p.m.** daily
3. The school will determine the apps and programs to be installed to support teaching & learning



Device Management Application (DMA)

After school hours DMA options available for parents/guardians.

	Default	Option A	Option B
After sch hours	In-school DMA settings continue	Parents/Guardians can modify DMA settings	Parents/Guardians can choose to disable DMA
For parents/guardians who	want their child's/ward's use of the PLD to be solely used for learning.	want to take charge of the DMA settings for their child's/ward's use of the PLD.	want their child/ward to use the PLD without any safety restrictions.
Remarks	<ul style="list-style-type: none">• Default is the best option for parents/guardians who prefer not to, or do not feel ready to manage their child's/ward's PLD use on their own.• Parents/guardians can request change of DMA settings by submitting a form through the GO. Changes to settings will take place at the end of every term.		



Device Management Application (DMA)

After school hours DMA options available for parents/guardians.

	Default	Option A	Option B
Inappropriate content	MOE/school adjusts level of web content filtering	Parents/Guardians can apply additional content filtering	No web content filtering
Reduce learning distractions	MOE/school standardises type of applications that can be installed	Parents/Guardians controls installation of applications (disabled during sch hrs)	Child/ward can install any application (disabled during sch hrs)
Screen time	School sets hours during which students can use the device*	Parents/Guardians can modify the amount of screen time	No control over the amount of screen time



Device Management Application (DMA)

After school hours DMA options available for parents/guardians.

	Default	Option A	Option B
Parent/guardian account	Provided to allow monitoring of PLD activities after school hours		Not provided
Monitor students' cyber activities	Parents/Guardians can track their child's/ward's browser history after school hours		Parents/Guardians will <u>not</u> be able to monitor or control their child's/ward's use of the device through the DMA after school hours



Device Management Application (DMA)

You may wish to consider the following questions before deciding on the choice of after-school DMA option best suited for your child's/ward's learning.

1. Child's/ward's current device usage habits

- ☐ How much time does my child/ward spend on his/her device?
- ☐ How well is my child/ward able to self-regulate device usage?
- ☐ Does my child/ward get easily distracted while studying?

2. Parents'/Guardians' involvement

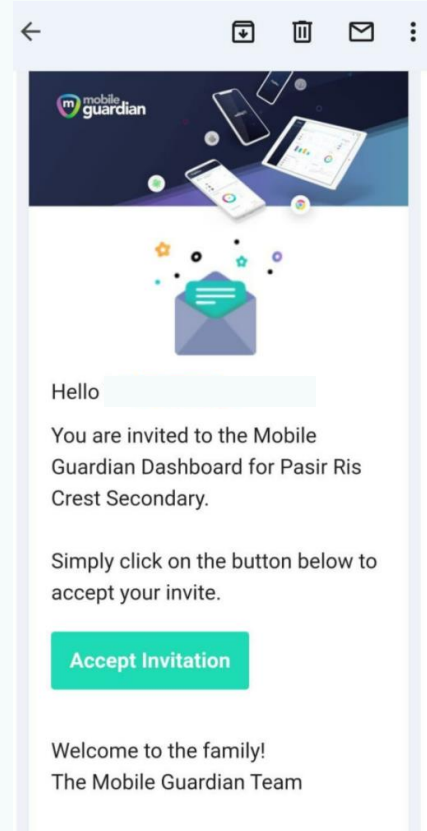
- ☐ Are there existing routines and open conversations on device usage at home?
- ☐ How confident and familiar am I with managing my child's/ward's cyber wellness?
- ☐ How confident and familiar am I with preventing different types of cyber threats that my child/ward might face?



Device Management Application (DMA)

Parents who have selected **Default Option** and **Option A** will be sent an **invitation**, to activate their DMA account, **via the e-mail address they provided in the consent form.**

Parents will need to accept the invite to access the DMA setting for their child.



Parents' Role

The school and parents are partners in ensuring our children are well supported in their use of technology for learning.

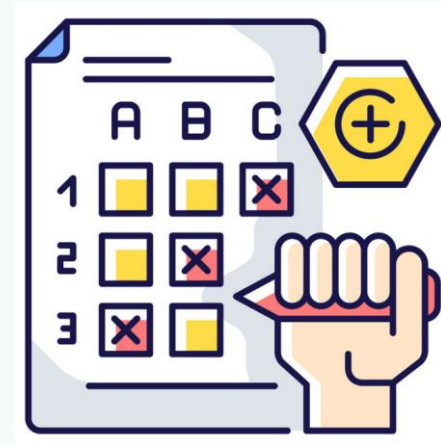
As parents, you can help in the following ways:

- ✓ Set ground rules for internet use.
- ✓ Model good digital habits for your child.
- ✓ Navigate the internet together to understand your child's usage.
- ✓ Know your child well by having conversations about safe & responsible use of technology.

Students Experience

A short experience for parents on how teachers make use of ICT to check on students learning and understanding at the end of each lesson.

A short MCQ quiz will be conducted.



Question 1

Which of the following devices will PRCS be using as the prescribed PLD?

- A. iPad Pro
- B. Chromebook
- C. Windows Laptop
- D. Student's Mobile Phone



Multiple Choice



Question 2

Student will be able to keep their PLD securely in school by using _____.

- A. Under student's tables
- B. Cable locks to tables
- C. Student lockers
- D. Students to keep their PLD on them at all times.



Multiple Choice



Question 3

What is the purpose of the Device Management Application (DMA) installed on student's PLD.

- A. Prevent students from accessing not approved content online.
- B. Allows the tracking of student's location.
- C. Allows students to install any apps.
- D. Prevents students from turning off their PLD.



Multiple Choice



Question 4

Parents can change the selected DMA profile by _____.

- A. Changes are not allowed.
- B. Submitting a form to the GO for the change.
- C. Make the self-change online.
- D. Students can make the change themselves.



Multiple Choice



Question 5

How long is the warranty for the students PLD?

- A. 1 year
- B. 2 years
- C. 3 years
- D. 4 years



Multiple Choice

Q & A

THANK YOU